

swe **NEXT** **Ed**
ENGAGE. INSPIRE. ENRICH.



SWENextEd Newsletter Vol. 6 – May 2017

Hello Educators! Reintroduce STEM through “Hidden Figures” legislation that supports engineering gender equity, and collaborative STEM grant monies. Invite your colleagues [to sign up for their free newsletter subscription](#). SWE is for everyone.

Bring Hidden Figures into the Classroom

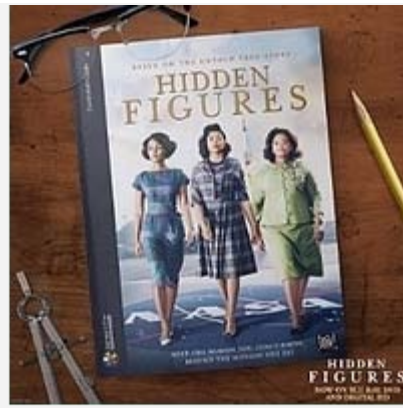


Every student needs to know the story of how “female computers” helped win the space race and put the first astronaut into orbit. The successful Hollywood movie “Hidden Figures” tells the untold story of these pioneering STEM

women putting it in context of gender, race and professional roles. New teacher resources that harness the storytelling power of film are now available to broaden your students’ world view of women in STEM that include vital life lessons in confidence, structural equity and academic excellence.

Designed primarily for social studies, the [Journeys in Film free "Hidden Figures" teacher curriculum guide](#) also includes two STEM lessons: (1) “Math of Space Travel” using geometry of orbits, scientific notation, and conic sections; and

(2) “Computers Come of Age” using physics and programming. All lessons are integrated into Common Core Math and Next Generation Science Standards.



Continue the legacy. Tell the untold story of the vital role women played in STEM history to your entire school. U.S. high schools, or educational establishments that include any of the grades 9 to 12, can obtain one [free complimentary "Hidden Figures" movie DVD](#).

Be in the Next Edition of Constance and Nano—Engineering Adventure!



Invite your students to be in the next edition of Constance and Nano—Engineering Adventure! SWE is hard at work on [issue #2 of Constance and Nano—Engineering Adventure!](#), our exciting comic book series that explores how fun solving problems with science, engineering, technology

and math can be! Constance and Nano's next adventure is going to be all about aerospace engineering—and we want to include one lucky SWENexter as a character in the story!

If your students in grades 6-8 are not a part of SWENext, encourage them to [join by visiting here today](#). The contest runs through June 23. [View the contest's full rules and agreements here](#).

Gender Equity in Engineering Education is Title IX

"When I would tell people I wanted to be an engineer, they didn't believe it," says [Sylvia Acevedo, engineer and interim CEO of Girl Scouts International](#). While research and practice show that women and girls are equally as adept at STEM as their male counterparts, subtle gender bias like Acevedo experienced from counselors, peers and teachers still persist and contribute to the engineering gender gap.



Very few people are aware that Title IX applies to STEM education. If your engineering program lacks female students, review NCWGE's [Title IX at 45 chapter on Women in STEM](#). Stereotypes and bias can limit female participation in "male dominated" fields. The DOE [Title IX STEM presentation](#) offers suggestions schools can use to transform and broaden girls' interests and participation. Strategies include a review of student counseling practices, career advisory training, and gender targeted recruitment and outreach.

Elective all [female engineering courses have been successful in public school settings](#). Targeted female engineering programs, or clubs like SWENext, help promote an engineering identity for female students. Yet [SWENext](#) is open to all students, both girls and boys. The fact is SWE is for everyone who supports women in engineering. For more information, check out SWE's [historical Title IX perspective](#) and AAUW's [Title IX Coordinator finder](#).

Discover Engineering Collaboration Grants

Can you think of a good way to spend \$1000 on students to get them excited about engineering?

This [DiscoverE Collaboration Grant](#) is

available to engage youth (particularly underserved K-12 students) with hands-on learning experiences that inspire an interest and

understanding of engineering. Designed to facilitate collaboration within the engineering community, partnering with a SWE member is a great way to get started towards winning this grant.



Looking to find a SWE member? SWE has [over 400 SWE sections in a city near you](#). Consider becoming a [SWE Educator member](#) yourself.

For only \$20/year, K-12 Educator Membership includes access to our member directory, [SWE Magazine](#), professional training, [grants](#) and more. It is a perfect means to start collaborating within the engineering community, to find speakers and to get your students involved in [SWENext](#). For more information, email SweNextEd@swe.org.



swe NEXT

Visit swenext.swe.org

Join the [SWENextEd](#)
Facebook Group.



Society of Women Engineers
130 East Randolph Street, Suite 3500
Chicago, IL 60601
